



HC-1

LCDR D. W. BEVERSDORF

OFFICER IN CHARGE

Helicopter Combat Support Squadron (HC) 1 Detachment 14 chopper pilots were aloft in their "Angels" whenever flight hours were in progress, ready to pick up aircraft crewmen in case of mishap during launches or recoveries. The UH2A and UH2B helicopters also were used to rescue men who had fallen overboard and to transfer people or cargo to shore locations or to other ships.





LT R.W. Vitek



LT P.J. Eversole



LT D.B. Hackett



LTJG D.L. Morgan



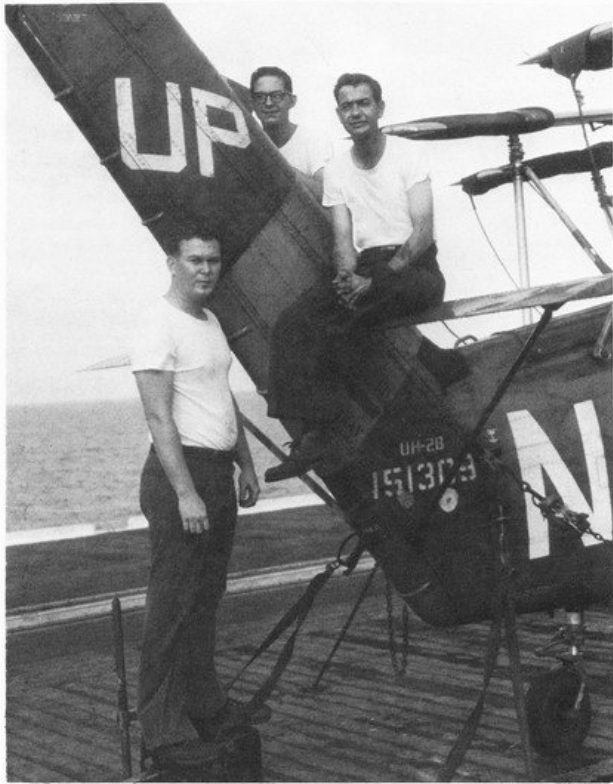
LTJG H.C. Newman



LTJG K.R. Smith



LTJG B.K. Life



NIGHT CHECK MAINTENANCE CREW - Back: AE3 D.D. Hamilton, AMH2 J.W. Doss, Front: AME3 J.L. Baker



DAY MAINTENANCE CREW - Top: AN A.J. Smallbrock, Back: AA S. P. Wargo, AMH3 P.J. Sullivan, ATI R.T. Bukowski, AE3 S.L. Tolman, ATN2 C.L. Naul, ADCS E.J. Drab, Front: AE2 R.L. Joyal, ADJ2 J.E. January



FLIGHT DECK CREWS - Back: AN R.L. Lowrie, AN B.F. Freitag, ADJ2 P.E. Estabrook, AN J.L. Grimm, Front: AMH3 L.J. Bugg, ADR2 R.R. Karnes, ADJ3 A.D. Rowland, ADJAN R.F. Stearns



AIRCREW MEN - Top: AMH1 C.W. Stecz, Back: AMH2 J.L. Driscoll, AE2 A.S. Dougans, AN S.B. Griffith, ATN3 W.D. Niska, ADJ3 D.R. Tracht, AMS2 J.D. Thayne, Front: AN W.T. Gribben, AN M.N. Holt

navysite.de

